

Thank you for your purchase of this Citizen watch. Before using the watch, read this instruction manual carefully to ensure correct use. After reading the manual, store it in a safe place for future reference.

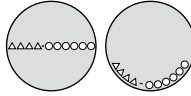
Be sure to visit the Citizen website at <http://www.citizenwatch-global.com/>. Here you will find a variety of information such as electronic setting guides, answers to frequently asked questions, Eco-Drive recharging information and more.

### To check the movement number

A case number—4 alphanumeric characters and 6 or more alphanumeric characters—is engraved on the case back.

The first 4 characters of the case number represent the movement number of the watch. In the example, “△△△△” is the movement number.

Engraving position example



The engraving position may differ depending on watch model.

### Safety precautions — IMPORTANT

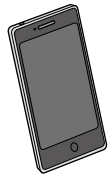
- This manual contains instructions that should be strictly followed at all times not only for optimal use, but to prevent any injuries to yourself, other persons or property. We encourage you to read the entire booklet (especially, pages 10 to 11) and understand the meaning of the following symbols:
- Safety advisories are categorized and depicted in this manual as follows:

	<b>DANGER</b>	Highly likely to cause death or serious injury
	<b>WARNING</b>	Can cause serious injury or death
	<b>CAUTION</b>	Can or will cause minor or moderate injury or damage

- Important instructions are categorized and depicted in this manual as follows: (Following symbols are examples of Pictograms.)

	Warning (caution) symbol followed by prohibited matters.
	Warning (caution) symbol followed by instructions that should be followed or precautions that should be observed.

### Features



#### ■ Connection with smartphones through the dedicated app

Indicates notifications such as upcoming calls to the smartphone. In addition, the watch has useful functions to prevent leaving the smartphone or search the phone missed. To get the dedicated app, access download sites of apps for your smartphones. For more information, see the web site below:  
<http://www.citizenwatch-global.com/support/>



#### ■ Eco-Drive

Never needs a new battery. This watch is fueled by light.



#### ■ Alarm

Sounds at the time set. The alarm may also be set through the dedicated app on your smartphone.



#### ■ Chronograph

Measures up to 60 minutes in one second increments.



#### ■ Local time

Easy to see the time for a second time zone, anywhere in the world. It may also be set through the dedicated app on your smartphone.



#### ■ Perpetual calendar

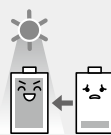
No need for monthly and leap-year date correction until February 28, 2100.

\* “Eco-Drive” is an original technology of Citizen.

### CONTENTS

Before using this watch.....	2
Operation through the dedicated app	2
Band adjustment.....	2
Protective stickers .....	2
How to use a specially designed crown/button .....	2
Component identification .....	2
Changing the mode .....	2
Checking the power reserve .....	3
Before connecting with a smartphone.....	3
Compatible smartphones .....	3
Time information reception.....	4
Notification indication on the watch.....	4
Canceling the notification indication .....	4
Pairing (registering) the smartphone .....	4
Choosing the destination to save registration information.....	4
Connecting/disconnecting the smartphone .....	5
Checking connection status .....	5
Disconnecting .....	5
Connecting.....	5
Choosing a smartphone and connecting to it .....	6
Finding my smartphone .....	6
Removing pairing (registration) information .....	6
Using local time [Local Time] .....	6
Using the chronograph .....	6
Using the alarm [Alarm] .....	7
Charging your watch.....	7
Adjusting the time and calendar manually .....	8
Troubleshooting .....	8
Checking and correcting the reference position .....	8
Bluetooth 4.0 wireless technology.....	9
Eco-Drive watch handling precautions.....	10
Water resistance .....	10
Precautionary items and usage limitations.....	10
Specifications .....	11

## Before using this watch



This watch has a rechargeable cell which is charged by exposing the dial to light. Expose the dial to direct sunlight regularly to charge the watch. For details of charging, see page 7.

After opening the package, confirm power reserve of the watch referring to page 3. Start connection to your smartphone after that.

### Operation through the dedicated app

Some functions of this watch can be controlled through the dedicated app. For details, see page 3.



The icon on the side of section titles means that functions which can also be controlled through the app are introduced in the section.

### Band adjustment

We recommend seeking the assistance of an experienced watch technician for sizing of your watch. If adjustment is not done correctly, the bracelet may unexpectedly become detached leading to loss of your watch or injury. Consult an authorized service center.

### Protective stickers

Be sure to remove any protective stickers that may be on your watch (case back, band, clasp, etc.). Otherwise, perspiration or moisture may enter the gaps between the protective stickers and the parts, which may result in a skin rash and/or corrosion of the metal parts.

### How to use a specially designed crown/button

Some models are equipped with a specially designed crown and/or push button to prevent accidental operation.

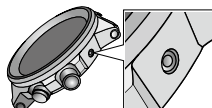
#### ■ Screw down crown/button

Unlock the crown/button prior to operate your watch.

	Unlock	Lock
<b>Screw down crown</b>	<p>Rotate the crown counterclockwise until it releases from the case.</p>	<p>Push the crown in to the case. With gentle pressure towards the case, rotate the crown clockwise to secure it to the case. Be sure to tighten firmly.</p>
<b>Screw down push button</b>	<p>Rotate the locking screw counterclockwise, and loosen until it stops.</p>	<p>Rotate the locking screw clockwise, and tighten firmly.</p>

#### ■ Recessed button

Press the button with a non-marring narrow-tipped object such as a wooden toothpick.

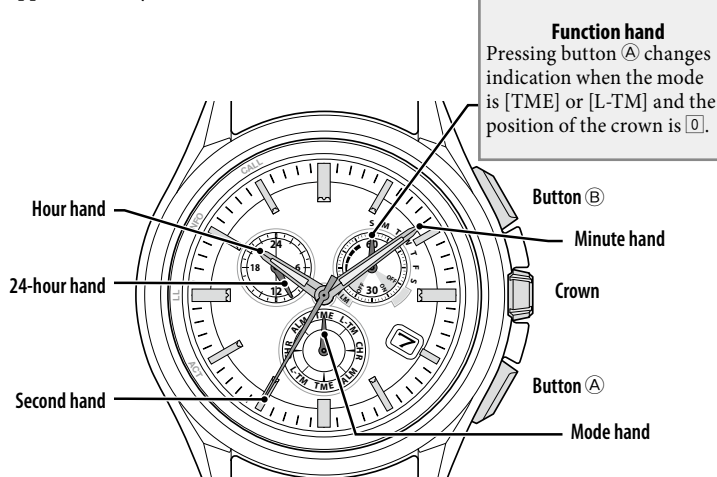


- Metal objects may cause marring or scratching of the button.

## Component identification

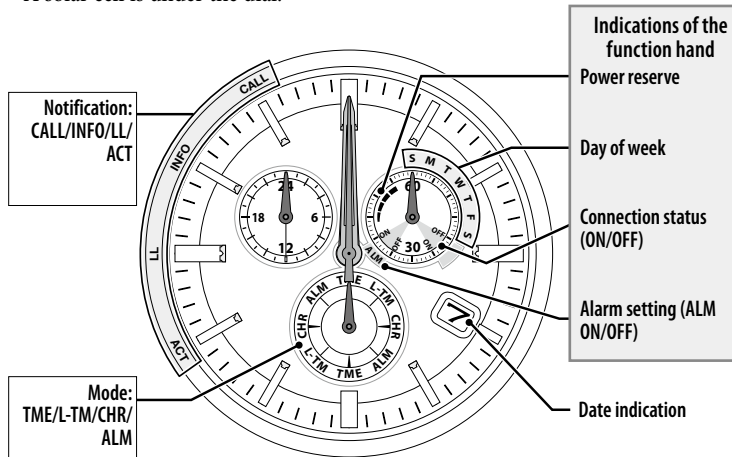
### Hands and buttons

- The illustrations in this instruction manual may differ from the actual appearance of your watch.



### Indication

- A solar cell is under the dial.



## Changing the mode

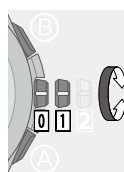
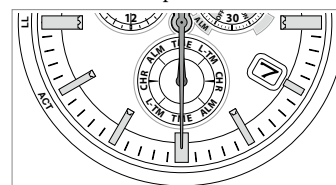
This watch features four different modes (functions).

<b>TME</b>	Shows ordinary time.
<b>L-TM</b>	Shows time and calendar different from those shown in the [TME] mode.
<b>CHR</b>	Mode for using the chronograph.
<b>ALM</b>	Mode for setting the alarm.



#### 1 Pull the crown out to position 1.

The second hand points the 30-second and stops.



#### 2 Rotate the crown to change the mode.

- Turn the crown so that the mode hand points to the marker of the desired mode securely.

#### 3 Push the crown in to position 0 to finish the procedure.

- The watch changes indication according to the selected mode.
- It may take a moment for the watch to complete changing indication.

## Checking the power reserve

For details of charging, see “Charging your watch” on page 7. Checking the power reserve

### Checking the power reserve

- For details of indications of power reserve level, see page 3.

- Change the mode to [TME] or [L-TM] (page 2) and push the crown in to position 0.
- Press and release the lower right button (A) repeatedly until the function hand indicates power reserve.



### Indication of power reserve in levels

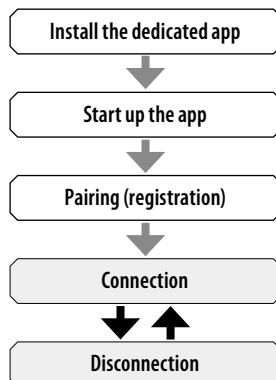
Level	3	2	1	0
Power reserve level scale				
Duration (approx.)	With connecting to a smartphone within 6 hours a day (receiving 10 notifications or so and vibrating once every reception)			180 days -
	280 - 250 days	250 - 200 days	200 - 180 days	
Meaning	Without connecting to a smartphone			Level where insufficient charge warning starts
	20.5 - 16.5 months	16.5 - 9 months	9 months - 180 days	
	Power reserve is sufficient.	Power reserve is OK.	Power reserve is getting low.	Level where insufficient charge warning starts
	OK for normal use		Charge immediately.	

### CAUTION

- When the power reserve level is “0”, smartphone-related features and functions are not available as follows:
  - Pairing (registration)
  - Connecting
  - Removing the pairing (registration) information
- Pressing button (A) does not change indication of the function hand when the power reserve level is “0”.
- Connection is terminated when the power reserve level becomes “0”. However, basic functions of the watch are still available.
- Some basic functions become unavailable as the second hand starts to move once every two seconds (insufficient charge warning function, page 7).

## Before connecting with a smartphone

This watch communicates with smartphones through Bluetooth Low Energy power-saving communication technology. You must install the dedicated app “CITIZEN Bluetooth Watch” on your smartphone and start it to make pairing (registration) between the phone and the watch to connect them. The flow of connection is as follows.



\* The Bluetooth® word mark and logos are registered trademarks owned by Bluetooth SIG, Inc.  
 \* Android is a trademark of Google Inc.  
 \* iOS is a name of an operating system of Apple Inc. IOS is a trademark or registered trademark of Cisco in the U.S. and other countries and is used under license.

## Compatible smartphones

You can see information about compatible smartphones (running Android OS 5.1/ iOS 9.3 or later, Optimized for iPhone 5 or greater.) and the dedicated app on the web site below:

<http://www.citizenwatch-global.com/support/>

- This watch can somewhat be operated through the dedicated app and it is equipped with functions available only through the app.

### Notice

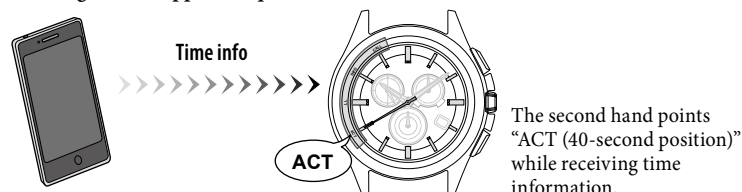
In places with restriction on the use of electronic devices such as in a airplane, terminate connection with your smartphone (page 5) and change the mode of the watch to [CHR] (page 2).

## Functions available with the connection

### Receiving time information (page 4)

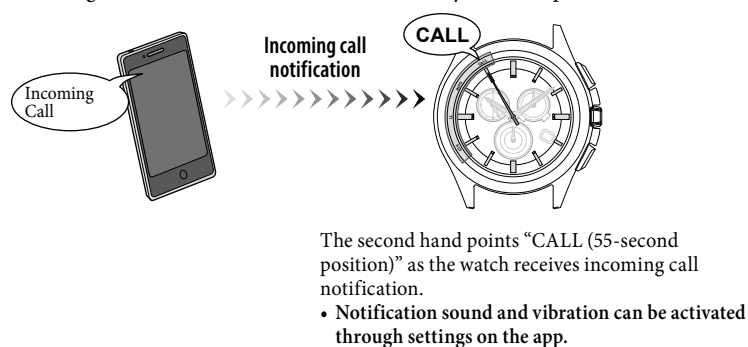
The watch adjusts time and calendar automatically using time info provided from the smartphone.

- Settings on the app are required to use this function.



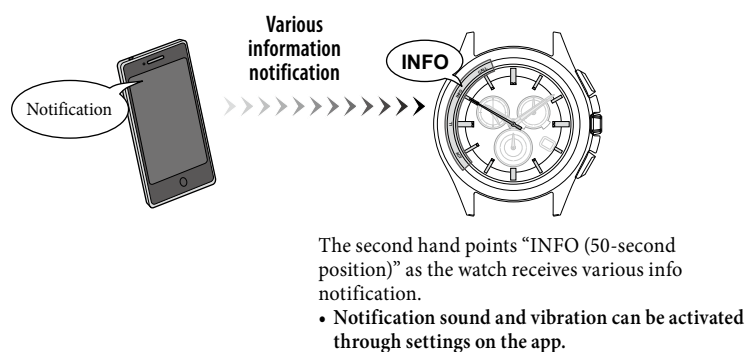
### Incoming call notification (CALL/call)

Incoming call notification comes to the watch as your smartphone receives a call.



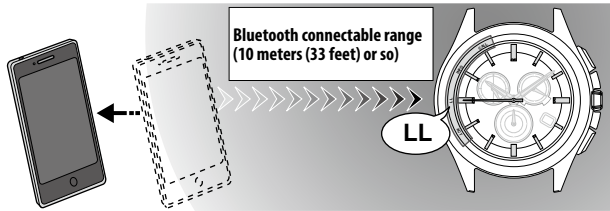
### Various information notification (INFO/information)

Notification comes to the watch as your smartphone receives an e-mail or other notification such as a calendar event, SNS, etc.



### ■ Disconnection notification (LL/Link Loss)

The watch notifies you of your smartphone's disconnection due to distance or other reasons.



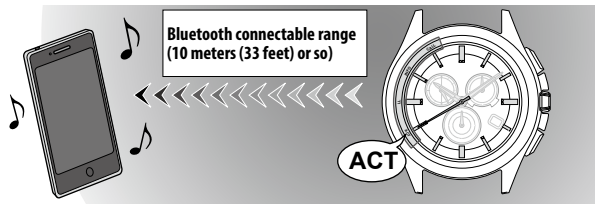
The second hand points "LL (45-second position)" when connection is disconnected.

- Notification sound and vibration can be activated through settings on the app.

### ■ Making the smartphone emit sound (page 6)

The watch can send signals to a registered smartphone. The smartphone emits sound when receiving the signals.

- The watch can make the smartphone emit sound even if their connection is not active.



The smartphone keeps emitting sound once it receives the signals.

The second hand points "ACT (40-second position)" as it starts to send signals.

### Time information reception

This watch can receive time information from your smartphone and adjust the time and calendar automatically (automatic time information reception). Automatic time information reception is executed at the first cancelation of power save status (page 7) every day (after 3:00 AM of the [TME] mode on the watch).

- Even when the watch is disconnected with a connectable smartphone, it is temporarily connected with the phone and get time information.

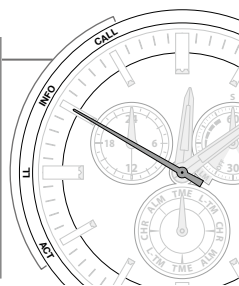
Automatic time information reception function does not work in the following cases:

- When the mode of the watch is not [TME] or [L-TM].
- [Time Sync] setting of the dedicated app is off.

### Notification indication on the watch

The second hand points the notification indication corresponding to the type of received notification.

Notification indication by the second hand		
Indication	Position	Meaning
CALL	55 second	Incoming phone calls
INFO	50 second	Various info notification
LL	45 second	Disconnection notification (Link Loss)
ACT	40 second	Receiving time info or connecting (Activation)



- The notification indication by the second hand is shown only when the mode of the watch is [TME] or [L-TM] and the position of the crown is 0. When the watch receives notification in statuses other than above, notification indication is postponed until its status changes to any one above.
- When the watch receives a new notification while it indicates a notification, the old one is canceled and the new one is indicated.

### ■ Notification sound and vibration

Notification sound and vibration can be activated by using [Notification] setting on the app in addition to the indication of the second hand.

- Notification by sound or vibration will occur even when the second hand cannot indicate notification. In addition, notification sound and vibration occurs again with notification indication by the second hand when the hand indication was postponed.

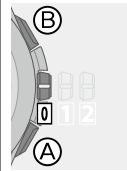
### ■ Notification reception area

- Connection range between the watch and the smartphone is up to about 10 m (33 feet). The range may be shorter due to obstacles such as walls. Do not block the watch with your body such as your arm.

### Canceling the notification indication

The second hand showing notification indication does not return to indicate the seconds until the indication is canceled.

- Once manually canceled, notification indication cannot be shown again.



- 1 Press and hold the lower right button (A) or the upper right button (B) for 1 second while notification is indicated.

The notification indication is canceled and the second hand returns to indicate the seconds.

- Changing the position of the crown also cancels the notification indication.

### Testing the notification vibration

The notification vibration feature can be checked.

- You cannot test it while the power reserve level is in "0".
- The vibration settings must be executed from the app.



- 1 Change the mode to [ALM] (page 2) and push the crown in to position 0.

- 2 Press and release the upper right button (B).

The watch starts vibrating.

- Notification vibration is repeated five times.

- 3 Change the mode to [TME] and push the crown in to position 0 to finish the procedure.

The second and function hands return to normal.

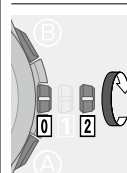
### Pairing (registering) the smartphone

Execute registration at first when connecting the watch and your smartphone.

#### ■ Before registration

- Unique registration information is saved on the watch and smartphone as registration is executed.
- Up to three registrations can be saved on the watch with choosing saving destination. Saved registration information can be checked on the app.
- When you have two or more registered smartphones, you can switch saved registration information to connect/disconnect one (page 5).
- New registration information cannot be saved on the saving destination containing one without deleting the existing one (page 6).

### Choosing the destination to save registration information



- 1 Change the mode to [TME] (page 2) and pull the crown out to position 2.

The second hand points the (saving destination of) registration information currently chosen and the function hand indicates connection status (ON/OFF).

- 2 Rotate the crown to choose the destination to save registration information.

..... Saving destination of registration information 1

..... Saving destination of registration information 2

..... Saving destination of registration information 3

- 3 Push the crown in to position 0 to finish the procedure. The second and function hands return to normal.

## Registering a smartphone

- For registration, you have to operate both the watch and the smartphone.
- Be sure both the watch and smartphone are sufficiently charged. Especially, it is important to check power reserve of the watch (page 3) and charge it before registration if the power reserve level is "1" or "0".
- Registration operation on the watch must be completed within a certain period of time. If about 30 seconds have elapsed before finishing operation, the watch returns to normal movement.

### <Operation on the smartphone>



- 1 Download the dedicated app "CITIZEN Bluetooth Watch" at an app site and install it.
- 2 Start the dedicated app.
  - Keep the app showing on the smartphone screen.
  - Agree when a dialog appears to request your permission to use Bluetooth connection.

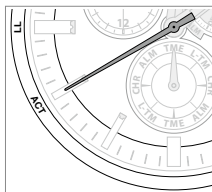
### <Operation of the watch>



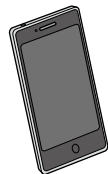
- 3 Change the mode to [TME] or [L-TM] (page 2) and push the crown in to position 0.
- 4 Press and release the upper right button B.
 

The second hand points "ACT (40-second position)" and registration starts.

  - The smartphone will be connected if it has already been registered before.



### <On the smartphone>

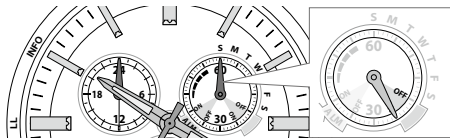


- 5 "Connected" appears as registration is successful.
  - It may take about 20 - 30 seconds to finish registration.

The watch and smartphone are connected as registration is successful.

### ■ When registration is successful

The function hand of the watch will point "ON" of connection status and the second hand returns to indicate the seconds.



In the cases below, registration is not successful:

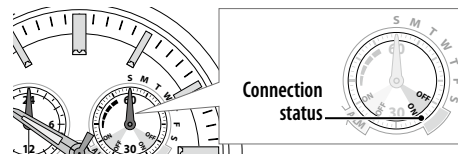
- The second hand of the watch points "LL (45-second position)".
- The second hand of the watch points "ACT (40-second position)" and returns to indicate the seconds and the function hand does not point "ON" of connection status.

## Connecting/disconnecting the smartphone

### Checking connection status



- 1 Change the mode to [TME] or [L-TM] (page 2) and push the crown in to position 0.
- 2 Press and release the lower right button A repeatedly until the function hand indicates connection status (ON/OFF).



### ■ Connection status indication

The function hand automatically indicates connection status (ON/OFF) as the connection status between the watch and the smartphone changes.

ON	OFF
Connected	Disconnected

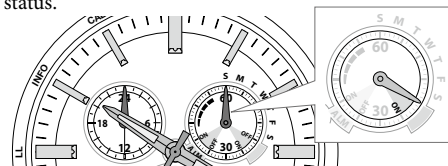
### Disconnecting

- Cancel the notification indication of the second hand before disconnecting (page 4).



- 1 While connected, change the mode to [TME] or [L-TM] (page 2) and push the crown in to position 0.
- 2 Press and hold the upper right button B for 4 seconds.
 

The second hand points "ACT (40-second position)" and, after disconnection, the function hand points "OFF" of connection status.



### Connecting

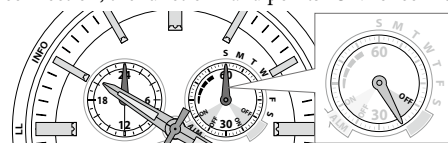
You can reconnect the watch to a disconnected smartphone.

- The watch cannot be connected with a non-registered smartphone (page 4).
- See page 6 to connect the watch to another registered smartphone.



- 1 While disconnected, change the mode to [TME] or [L-TM] (page 2) and push the crown in to position 0.
- 2 Press and release the upper right button B.
 

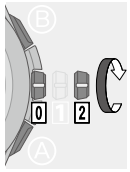
The second hand points "ACT (40-second position)" and, after connection, the function hand points "ON" of connection status.



## Choosing a smartphone and connecting to it

Way to choose registration information of a smartphone from three saving destinations and connect the watch to it.

- The watch cannot be connected with two or more smartphones at the same time.



- 1 Change the mode to [TME] (page 2) and pull the crown out to position 2.**

The second hand points the registration information currently chosen and the function hand indicates connection status (ON/OFF).

- 2 Rotate the crown to choose registration information.**

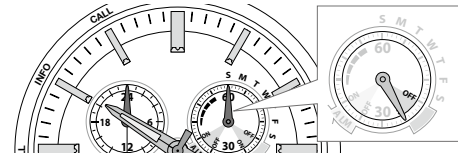


- 3 Push the crown in to position 0 keeping the mode [TME].**

- Connection with another smartphone is terminated.

- 4 Press and release the upper right button (B).**

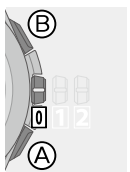
The second hand points "ACT (40-second position)" and, after connection, the function hand points "ON" of connection status.



## Finding my smartphone

You can make the smartphone currently chosen as the connection target emit sound when it is in connectable range.

- This function is available even when the phone is not connected.
- Cancel the notification indication of the second hand before disconnecting (page 4).



- 1 Change the mode to [TME] or [L-TM] (page 2) and push the crown in to position 0.**

- 2 Press and release both the lower right button (A) and upper right button (B) simultaneously.**

The smartphone will start emitting sound.

- The sound does not stop until it is stopped on the smartphone.

- 3 Stop the sound following instructions on the screen of the smartphone.**

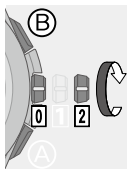
## Removing pairing (registration) information

After pairing (registering), the watch and the smartphone store registration information of each other.

You must remove the registration information from both the watch and the smartphone in the following cases:

- When registration information is lost either on the watch or the smartphone.
- When you want to save registration information of the smartphone on another saving destination.
- When the app has been updated or reinstalled.
- When you cannot reconnect the watch and smartphone after registration even after following the correct steps.

### To remove the registration information on the watch



- 1 Change the mode to [TME] (page 2) and pull the crown out to position 2.**

The second hand points the registration information currently chosen and the function hand indicates connection status (ON/OFF).

- 2 Rotate the crown to choose registration information to remove.**

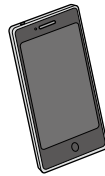
- 3 Press and hold the upper right button (B) for about 7 seconds.**

The second hand turns fully around and removing is finished.

- 4 Push the crown in to position 0 to finish the procedure.**

The second and function hands return to normal.

## Removing registration information on the smartphone



- 1 Remove "Eco-Drive W770" from the list of registered Bluetooth devices on the smartphone.**

For the method to remove, refer to your smartphone instructions.

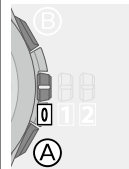
- When "Eco-Drive W770" cannot be seen, it has already been deleted.

## Using local time [Local Time]

An alternate time which is different from that in the [TME] mode (local time) can be shown.

- Local time can be set within a range of  $\pm 27$  hours from UTC (Coordinated Universal Time).
- Indication of date and day of week changes corresponding to local time set.

### Indicating local time

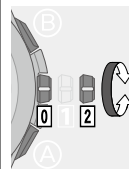


- 1 Change the mode to [L-TM] (page 2) and push the crown in to position 0.**

The local time currently set is displayed.

- Press and release the lower right button (A) repeatedly until the function hand indicates day of week when it does not show day of week.

### Adjusting the local time



- 1 Change the mode to [L-TM] (page 2) and pull the crown out to position 2.**

The second hand points 0 second and the local time is displayed.

- 2 Rotate the crown to adjust the local time.**

The minute hand moves in 15 minute increments.

- When you rotate the crown quickly a few times, the hands/indication will move continuously.

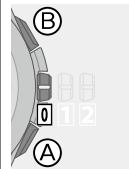
To stop the rapid movement, rotate the crown in either direction. They stop automatically after moving  $\pm 12$  hours.

- 3 Push the crown in to position 0 to finish the procedure.**

## Using the chronograph

The chronograph on this watch can measure up to 60 minutes by 1 second.

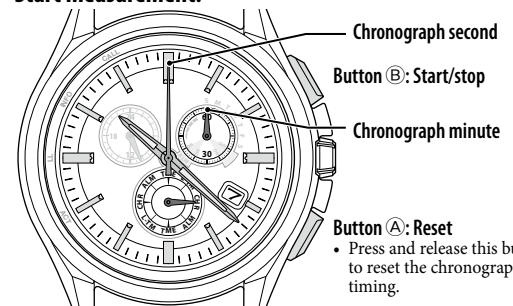
- After 60 minutes of continuous chronograph operation, the chronograph automatically stops and is reset.
- Indication of the function hand cannot be changed in the [CHR] mode.



- 1 Change the mode to [CHR] (page 2) and push the crown in to position 0.**

The second hand and function hand indicate 0' 0". The other hands and indication keep showing time in the [TME] mode.

- 2 Start measurement.**



- Pulling out the crown will stop and reset the chronograph.

- 3 Change the mode to [TME] and push the crown in to position 0 to finish the procedure.**

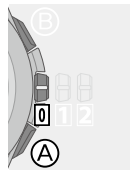
The second and function hands return to normal.

## Using the alarm [Alarm]



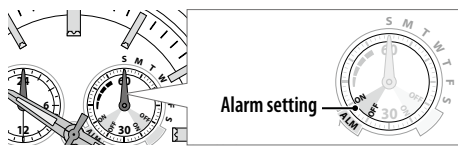
- The alarm on this watch is based on the time of the [TME] mode.
- Indication of the function hand cannot be changed in the [ALM] mode.

### Checking the alarm setting

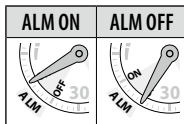


#### 1 Change the mode to [ALM] (page 2) and push the crown in to position 0.

The hour, minute and 24-hour hands indicate the alarm time currently set and the function hand shows the alarm setting (ALM ON/OFF).



- Each time you press button A, ON/OFF of the setting changes alternately.



#### 2 Change the mode to [TME] and push the crown in to position 0 to finish the procedure.

Indication returns to normal.

#### ■ When the time set comes

Alarm sounds for 15 seconds as the time set comes.

- Alarm does not sound when the position of the crown is not 0.

#### ■ To stop the alarm sound

Press any button.

### Changing alarm setting

- The alarm time is set in 24-hour basis.



#### 1 Change the mode to [ALM] (page 2) and pull the crown out to position 2.

The alarm time currently set is displayed and the function hand shows the alarm setting (ALM ON/OFF).

#### 2 Press and hold lower right button A for 2 seconds or more.

The minute hand moves slightly indicating the alarm time may be set.

#### 3 Rotate the crown to set the alarm time.

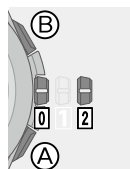
- Check AM/PM referring to the 24-hour hand.
- If you rotate the crown quickly a few times, the hands will move continuously. To stop the rapid movement, rotate the crown in either direction.

#### 4 Press and release the lower right button A to set the alarm setting (ALM ON/OFF).

- Each time you press the button A, ON/OFF changes alternately.

#### 5 Change the mode to [TME] and push the crown in to position 0 to finish the procedure.

Indication returns to normal.



#### ■ Checking the alarm

Alarm sounds while pressing and holding button B in step 1.

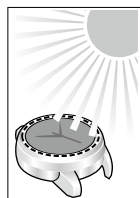
## Charging your watch

This watch has a solar cell under the dial and stores the power generated by the cell in its built-in rechargeable cell.

The cell is charged by exposing the dial to light such as direct sunlight or fluorescent lamps.

For optimal performance, be sure to:

- Put the watch in a location where the dial is exposed to bright light such as by the window even when it is not used.
- Expose its dial to direct sunlight for 5 or 6 hours at least every week.
- Do not leave the watch in dark places for long periods of time.



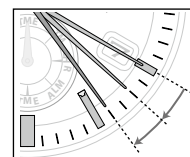
#### CAUTION

- Do not charge the watch at a high temperature (about 60°C (140°F) or higher) as doing so may cause movement malfunction.
- If the watch is obscured from light by long sleeves frequently, supplemental charging may be needed to ensure continual operation.

- The watch stops charging automatically when the cell is fully charged (overcharging prevention function). The function prevents damage to performance of the watch and rechargeable cell due to overcharging.

### When the watch reaches a low charge state (insufficient charge warning function)

When the power reserve becomes low, the second hand moves once every two seconds. This is the insufficient charge warning function. Be sure to fully charge your watch immediately as outlined below.



- When the watch is sufficiently charged, the second hand will move normally.
- If you do not charge the watch for 10 days or longer after the insufficient charge warning movement has begun, the watch will be depleted of all power and stop.

#### ■ During the insufficient charge warning state

The time, date and day of week are indicated correctly.

- The indication in the [TME] mode is displayed in the other modes and functions in them are not available.

### Charging time by environment

- Below are the approximate charging times when exposing to light continuously. Please use this table as a reference only.

Environment	Illuminance (lx)	Charging time (approx.)		
		To work for one day	To start working normally when the cell is discharged	To become fully charged when the cell is discharged
Outdoors (sunny)	100,000	12 minutes	9.5 hours	30 hours
Outdoors (cloudy)	10,000	30 minutes	25 hours	70 hours
20 cm (7-7/8 inches) away from a fluorescent lamp (30W)	3,000	1.5 hours	70 hours	—
Interior lighting	500	8 hours	—	—

- Exposing to direct sunlight is recommended to charge your watch. A fluorescent lamp or interior lighting does not have sufficient illumination to charge the rechargeable cell efficiently.

After charged fully, the watch runs without additional charging

Using with a smartphone	Using with no smartphones
About 9 months*	About 1.5 years

\* When the watch is connected to your smartphone about 6 hours a day and receives messages about 10 times a day, you can use the connecting feature of the watch about 100 days in the 9 months. For details, see page 3.

#### Cautions when connected with a smartphone

- Long-time connection with a smartphone and reception of many notifications in a day will accelerate power consumption. Be sure to keep your watch sufficiently charged when always connecting the watch with your smartphone.
- We recommend disconnecting your smartphone (page 5) when connection is not needed.
- Be also sure your smartphone is sufficiently charged.

### Power save function

The second hand stops automatically to save power when no power generation of the watch has continued in a dark place.

- The watch works normally even while saving power.
- The power save function does not operate under the following conditions:
  - The crown is in position 1 or 2.
  - The mode is [CHR] or [ALM].
  - The second hand indicates notification.

#### ■ Canceling the power save function

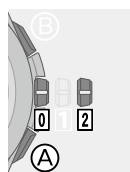
The power save status ends and the hands return to normal indication as the watch is operated or the dial is exposed to light and power generation starts.

- Power save status is also canceled when receiving time info or notification.

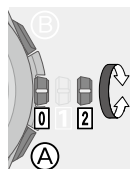
## Adjusting the time and calendar manually

You can set the time and calendar of the [TME] mode manually.

- The local time is also corrected automatically when the time is set.



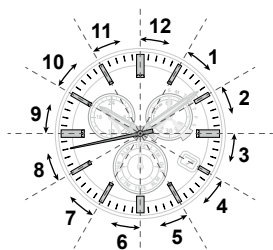
- Change the mode to [TME] (page 2) and pull the crown out to position 2.**  
The second hand points the registration information currently chosen.
- Press and hold the lower right button (A) for 2 seconds or more.**  
The second hand stops at 0 second and the minute hand slightly moves.
- Press and release the lower right button (A) repeatedly until the hand/indication to be corrected is selected.**
  - Each time you press button (A), the target changes as follows.  
**Hour/minute** → **date** → **year/month** → **day of week** → (back to the top)
  - The hand or indication slightly moves when selected to show it becomes adjustable.
- Rotate the crown to adjust the hand/indication.**
  - The hour, minute and 24-hour hands move in conjunction with one another.
  - Check AM/PM referring to the 24-hour hand.
  - Year and month are indicated with the second hand.
  - Date indication changes to the next as the function hand rotates 5 times.
  - When you rotate the crown quickly a few times, the hands and date indication will move continuously. To stop the rapid movement, rotate the crown in either direction.
- Repeat steps 3 and 4.**
- Push the crown in to position 0 in accordance with a reliable time source to finish the procedure.**



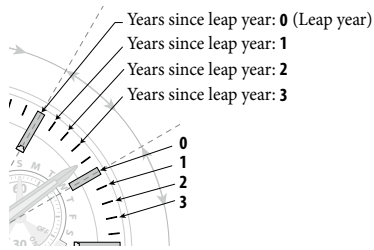
### Month and year indications

Set the year and month with the position of the second hand.

“Month” corresponds to one of the 12 zones shown in the figure below. Each number means month.

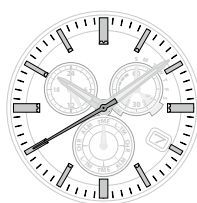


“Year” corresponds to the years since leap year and is indicated with markers in the zone of each month.



Actual year	Years since leap year	Second hand position
2016 2020 2024 2028	0 (Leap year)	Hour marker
2017 2021 2025 2029	1	1st min. marker
2018 2022 2026 2030	2	2nd min. marker
2019 2023 2027 2031	3	3rd min. marker

**Examples: Position of the second hand when setting August 2016**  
You can find that the years since leap year of 2016 is “0” from the table and the second hand must be set to the hour marker of August zone.



## Troubleshooting

### Checking and correcting the reference position

If the time or calendar is not shown correctly even after proper reception of the time info, check whether the reference position is correct.

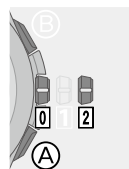
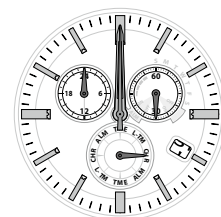
- If the hands and indication do not reflect the correct reference position, the time and calendar will not be indicated accurately even if the time info is received.

#### What is the reference position?

The base position of all hands and calendar to properly indicate the various functions of this watch.

- Hour, minute and second hands: 0 hour 00 minute 0 second
- 24-hour hand: “24”
- Date indication: midway between “31” and “1”
- Function hand: “30” (straight down)

#### Correct reference positions



- Change the mode to [CHR] (page 2) and pull the crown out to position 2.**  
The second hand moves to the current reference positions stored in memory and stops.
- Press and hold the lower right button (A) for 2 seconds.**  
The hands and indication start to move to the current reference positions stored in memory.
  - Release the button as the hands start to move.
- Check the reference positions of them referring to the illustration above.**

Correct	Push the crown in to position 0 to finish the procedure. Set the mode to [TME] after that.
Wrong	Proceed to step 4 and correct the reference position.

- Press and release the lower right button (A).**  
The function hand slightly moves and the hand and date indication become adjustable.
- Press and release the lower right button (A) repeatedly until the hand/indication to be corrected is selected.**
  - Each time you press the button, the target changes as follows:  
**Function hand/date indication** → **Hour/minute/24-hour hands** → **Second hand** → (back to the top)
  - The hand slightly moves when selected to show it becomes adjustable.
  - The function hand points “60” (straight up) when the hour, minute and 24-hour hands are the targets of adjustment.
- Rotate the crown to adjust the hand/indication.**
  - The hour, minute and 24-hour hands move in conjunction with one another.
  - Date indication changes to the next as the function hand rotates 5 times.
  - When you rotate the crown quickly a few times, the hand/indication will move continuously. To stop the rapid movement, rotate the crown in either direction.
- Repeat steps 5 and 6.**
- Push the crown in to position 0.**
- Change the mode to [TME] to finish the procedure.**





Symptom	Remedies	Page
<b>Connection with the smartphone</b>		
Connection is unsuccessful. • If the remedies on the right do not solve the problems, consult an authorized service center.	Check the power reserve.	3
	Check the mode and position of the crown of the watch.	5
	Cancel the notification indication.	4
	Start the dedicated app.	—
	Check the Bluetooth settings of your smartphone.	—
	Avoid anything that will block out the radio wave or generate noise.	—
	Choose another registered smartphone.	6
	Remove registration and register again.	6, 4
The smartphone cannot be registered.	Check and try another saving destination.	4
	Remove registration information and try to register again.	6, 4
Not notified within connectable distance	Check the connection status (ON/OFF).	5
	Check the power reserve.	3
	Check the mode and position of the crown of the watch.	5
	Start the dedicated app.	—
	Check the notification setting of the app.	—
	Avoid anything that will block out the radio wave or generate noise.	—
Connection breaks unintentionally.	Start the dedicated app.	—
	Check settings of the app.	—
	Check whether the smartphone exists within the connectable range (10 meters (some 33 feet) or so).	—
	Avoid anything that will block out the radio wave or generate noise.	—
Time info cannot be obtained automatically.	Check the connection status (ON/OFF).	5
	Start the dedicated app.	—
	Check settings of the app.	—
	Check whether the smartphone exists within the connectable range (10 meters (some 33 feet) or so).	—
Cannot make the smartphone emit sound.	Avoid anything that will block out the radio wave or generate noise.	—
	Start the dedicated app.	—
	The smartphone does not exist within the connectable range (10 meters (some 33 feet) or so).	—
	Check whether headphones are connected to the smartphone.	—
	Register the smartphone.	4
<b>Movement of a hand seems strange</b>		
The hands rotate rapidly soon after you take the watch out of a case or something similar.	The power save function is canceled. Wait until the current time is displayed.	—
The hands move in an unexpected direction.	Check the current mode.	2
The second hand does not move.	Check the power reserve.	3
	Cancel the notification indication.	4
	Check the current mode.	2
The second hand moves once every two seconds.	Charge the watch.	7
The power reserve is not indicated.	Change indication of the function hand.	2
Connection status is not indicated.	Change indication of the function hand.	2
	Check the power reserve and charge if the power reserve level is "0".	3, 7
The alarm setting is not indicated.	Change indication of the function hand.	2
	Charge the watch.	7

Symptom	Remedies	Page
<b>Time/calendar is abnormal.</b>		
The indication of the time and date is incorrect.	Check the current mode.	2
	Obtain time info from the smartphone to adjust time and calendar.	—
	Check time and calendar of the smartphone.	—
	Adjust the time and calendar manually.	8
	Check and correct the reference position.	8
Day of week is not indicated.	Change indication of the function hand.	2
	Charge the watch.	7

### Resetting the watch — All Reset

When the watch does not work properly, you can reset all the settings. If the power reserve is insufficient, charge the watch first.

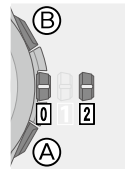
**Be sure to perform the following operations after All Reset.**

#### 1. Correct the reference positions.

After All Reset, the watch is in the reference position adjustment mode.  
Refer to step 4 and after on page 8.

#### 2. Adjust the time and calendar.

Adjust the time and calendar manually (page 8) or by connecting with your smartphone.



**1 Change the mode to [CHR] (page 2) and pull the crown out to position 2.**

**2 Press and hold buttons A and B at the same time for 4 seconds or more and release them.**

The watch emits an alarm sound and vibrates as the buttons are released and the hands move to their current reference position.

The setting values after All Reset	
Calendar	January 1 of leap year, Sunday
Local time	±0 from UTC
Alarm setting	ALM OFF
Alarm time	0:00AM
Registration information of smartphones	Registration information is kept and registration information 1 is set as connection target.
Connection status	OFF

## Bluetooth 4.0 wireless technology

### Before Use

Use of the Bluetooth communication technology is not permitted in some countries or regions. Visit our web site below to confirm the list of countries where Bluetooth is legally available.

<http://www.citizenwatch-global.com/support/>

- Using this watch in a country not on the list may be punished under its law.
- Communication using Bluetooth may be monitored intentionally or accidentally. Do not use this watch for important communication or any one involving human lives.
- The Bluetooth word mark and logos are owned by Bluetooth SIG, Inc.



## Eco-Drive watch handling precautions

### <Always Make Sure to Recharge Frequently>

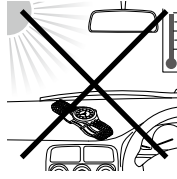
- For optimal performance, your watch should remain fully charged.
- Long sleeves may inhibit light transmission to your watch. This may result in your watch losing charge. In these cases supplemental charging may be necessary.
- When you take off the watch, place it in a bright location to ensure optimal performance.

### ⚠ CAUTION Recharging Precautions

- Do not charge the watch at a high temperature (about 60 °C (140 °F) or higher) as doing so may cause the movement to malfunction.

Examples:

- Charging the watch too close to a light source which generates a large amount of heat such as an incandescent lamp or halogen lamp.
  - \* When charging under an incandescent lamp, be sure to leave 50 cm (20 inches) or more between the lamp and the watch to avoid exposing the watch to excessive heat.
- Charging the watch in a location where the temperature may become extremely high such as on the dashboard of a vehicle.



### <Replacement of Rechargeable Cell>

- This watch utilizes a special rechargeable cell that does not require periodical replacement. However power consumption may increase after using the watch for a number of years due to wear of internal components and deterioration of oils. This may cause stored power to be depleted at a faster rate. For optimal performance, we recommend having your watch inspected every 2-3 years for proper operation and condition check.

### ⚠ WARNING Handling of Rechargeable Cell

- The rechargeable cell should never be removed from the watch. If for any reason it becomes necessary to remove the rechargeable cell from the watch, keep out of the reach of children to prevent accidental swallowing. If the rechargeable cell is accidentally swallowed, consult a doctor immediately.
- Do not dispose of the rechargeable cell with ordinary garbage. Please follow the instructions of your municipality regarding collection of batteries to prevent the risk of fire or environmental contamination.

### ⚠ WARNING Use Only the Specified Battery

- Never use a battery other than the rechargeable cell specified for use in this watch. Although the watch structure is designed so that it will not operate when another type of battery is installed, if a conventional watch battery or other type of battery is installed in the watch and the watch is recharged, there is the risk of overcharging which may cause the battery to rupture. This can cause damage to the watch and injury to the wearer. When replacing the rechargeable cell, always make sure to use the designated rechargeable cell.

## Water resistance

### ⚠ WARNING Water Resistance

- Refer to the watch dial and/or the case back for the indication of the water resistance of your watch. The following chart provides examples of use for reference to ensure that your watch is used properly. (The unit "1 bar" is roughly equal to 1 atmosphere.)
- WATER RESIST(ANT) ××bar may also be indicated as WR.××bar.
- Non-water resistant models are not designed to come into contact with any moisture. Take care not to expose a watch with this rating to any type of moisture.
- Water resistance for daily use (to 3 atmospheres) means the watch is water resistant for occasional accidental splashing.
- Upgraded water-resistance for daily use (to 5 atmospheres) means that the watch may be worn while swimming, but is not to worn while skin diving.
- Upgraded water-resistance for daily use (to 10/20 atmospheres) means that the watch may be worn while skin diving, but not while scuba or saturated diving using helium gas.

## Precautionary items and usage limitations

### ⚠ CAUTION To Avoid Injury

- Be particularly careful when wearing your watch while holding a small child, to avoid injury.
- Be particularly careful when engaged in strenuous exercise or work, to avoid injury to yourself and others.
- Do not wear your watch while in a sauna or other location where your watch may become excessively hot, since there is the risk of burns.
- Be careful when putting on and taking off your watch, since there is a risk of damaging your fingernails, depending on the manner in which the band is fastened.
- Take off your watch before going to bed.

### ⚠ CAUTION Precautions

- Always use the watch with the crown pushed in (normal position). If the crown is of the screw lock-type, make sure it is securely locked.
- Do not operate the crown or any push buttons when the watch is wet. Water may enter the watch causing damage to vital components.
- If water enters the watch or the watch fogs up and does not clear up even after a long time, consult your dealer or an authorized service center for inspection and/or repair.
- Even if your watch has a high level of water resistance, please be careful of the following.
  - If your watch is immersed in sea water, rinse thoroughly with fresh water and wipe with a dry cloth.
  - Do not pour water from a tap directly onto your watch.
  - Take off your watch before taking a bath.
- If seawater enters the watch, place the watch in a box or plastic bag and immediately take it in for repair. Otherwise, pressure inside the watch will increase, and parts (crystal, crown, push button, etc.) may come off.

### ⚠ CAUTION When Wearing Your Watch

#### <Band>

- Leather bands and rubber (urethane) bands will deteriorate over time due to perspiration dirt. Because of the natural materials, leather band will be worn, deformed, and discolored over time. It is recommended to replace the band periodically.
- The durability of a leather band may be affected when wet (fading, peeling of adhesive), owing to the properties of the material. Moreover, wet leather may cause a rash.
- Do not stain a leather band with substances containing volatile materials, bleach, alcohol (including cosmetics). Discoloration and premature aging may be occurred. Ultraviolet light such as direct sunlight may cause discoloration or deformation.
- It is recommended to take off the watch if it gets wet, even if the watch itself is water-resistant.
- Do not wear the band too tightly. Try to leave enough space between the band and your skin to allow adequate ventilation.
- The rubber (urethane) band may be stained by dyes or soil present in or on clothing or other accessories. Since these stains may not be removable, caution is required when wearing your watch with items that tend to easily transfer color (articles of clothing, purses, etc.). In addition, the band may be deteriorated by solvents or moisture in the air. Replace with a new one when it has lost elasticity or become cracked.
- Please request adjustment or repair of the band in the following cases:
  - You notice an abnormality with the band due to corrosion.
  - The pin of the band is protruding.
- We recommend seeking the assistance of an experienced watch technician for sizing of your watch. If adjustment is not done correctly, the bracelet may unexpectedly become detached leading to loss of your watch or injury. Consult an authorized service center.

#### <Temperature>

- The watch may stop or the function of the watch may be impaired in extremely high or low temperature. Do not use the watch in places where the temperature is outside the operating temperature range as stated in the specifications.

#### <Magnetism>

- Analog quartz watches are powered by a step motor that uses a magnet. Subjecting the watch to strong magnetism from the outside can cause the motor to operate improperly and prevent the watch from keeping time accurately. Do not allow the watch to come into close proximity to magnetic health devices (magnetic necklaces, magnetic elastic bands, etc.) or the magnets used in the latches of refrigerator doors, clasps used in handbags, the speaker of a cell phone, electromagnetic cooking devices and so on.

#### <Strong Shock>

- Avoid dropping the watch or subjecting it to other strong impact. It may cause malfunctions and/or performance deterioration as well as damage to the case and bracelet.

#### <Static Electricity>

- The integrated circuits (IC) used in quartz watches are sensitive to static electricity. Please note the watch may operate erratically or not at all if exposed to intense static electricity.

#### <Chemicals, Corrosive Gases and Mercury>

- If paint thinner, benzene or other solvents or products containing these solvents (including gasoline, nail-polish remover, cresol, bathroom cleaners and adhesives, water repellent, etc.) are allowed to come into contact with the watch, they may discolor, dissolve or crack the materials. Be careful when handling these chemicals. Contact with mercury such as that used in thermometers may also cause discoloration of the band and case.

#### <Protective Stickers>

- Be sure to remove any protective stickers that may be on your watch (case back, band, clasp, etc.). Otherwise, perspiration or moisture may enter the gaps between the protective stickers and the parts, which may result in a skin rash and/or corrosion of the metal parts.

Name	Indication	Specification	Water-related use					
	Dial or Case back		Minor exposure to water (washing face, rain, etc.)	Swimming and general washing work	Skin diving, marine sports	Scuba diving using an air tank	Saturation diving using helium gas	Operate the crown or button when the watch is wet
Non water-resistant	—	Non water-resistant	NO	NO	NO	NO	NO	NO
Everyday use water-resistant watch	WATER RESIST	Water-resistant to 3 atmospheres	OK	NO	NO	NO	NO	NO
Upgraded everyday use water-resistant watch	W. R. 5 bar	Water-resistant to 5 atmospheres	OK	OK	NO	NO	NO	NO
	W. R. 10/20 bar	Water-resistant to 10 or 20 atmospheres	OK	OK	OK	NO	NO	NO



**⚠ CAUTION Always Keep Your Watch Clean**

- Rotate the crown while it is pressed in fully and press the buttons periodically so they do not become stuck due to accumulations of foreign matter.
- The case and band of the watch come into direct contact with the skin. Corrosion of the metal or accumulated foreign matter may result in black residue coming from the bracelet when exposed to moisture or perspiration. Be sure to keep your watch clean at all times.
- Be sure to periodically clean the bracelet and case of your watch to remove accumulated dirt and foreign matter. In rare circumstances, accumulated dirt, foreign matter may cause irritation with the skin. If you notice this, discontinue wearing the watch and consult your physician.
- Be sure to periodically clean foreign matter and accumulated materials from the metal band, synthetic rubber strap (polyurethane) and/or metal case using a soft brush and mild soap. Be careful not to allow moisture on the case if your watch is not water resistant.
- Leather bands may become discolored by perspiration or dirt. Always keep your leather band clean by wiping with a dry cloth.

**Caring for Your Watch**

- Wipe any dirt or moisture such as perspiration from the case and crystal with a soft cloth.
- For metallic, plastic or synthetic rubber (polyurethane) band, clean it with soap and a soft toothbrush. Be sure to thoroughly rinse the band after cleaning to remove any soap residue.
- For a leather band, wipe off dirt using a dry cloth.
- If you will not be using your watch for an extended period of time, carefully wipe off any perspiration, dirt or moisture and store in a proper location, avoiding locations subject to excessively high or low temperatures and high humidity.

**<When Luminous Paint is used for your watch>**

The paint on the dial and hands helps you with reading the time in a dark place. The luminous paint stores light (daylight or artificial light) and glows in a dark place.

It is free from any radioactive substance or any other material harmful to a human body or environment.

- The light emission will appear bright at first and then diminish as time passes.
- The duration of the light ("glow") will vary depending on the brightness, types of and distance from a light source, exposure time, and the amount of the paint.
- The paint may not glow and/or may dissipate quickly if exposure to light was not sufficient.

**Specifications**

Model	W770	Type	Analog solar-powered watch				
<b>Timekeeping accuracy (without reception)</b>	Average monthly accuracy: $\pm 15$ seconds when worn at normal operation temperatures between $+5^{\circ}\text{C}$ ( $41^{\circ}\text{F}$ ) and $+35^{\circ}\text{C}$ ( $95^{\circ}\text{F}$ )						
<b>Operating temperature range</b>	$-10^{\circ}\text{C}$ ( $14^{\circ}\text{F}$ ) to $+60^{\circ}\text{C}$ ( $140^{\circ}\text{F}$ )						
<b>Display functions</b>	<ul style="list-style-type: none"> <li>• Time: Hours, minutes, seconds, 24-hour</li> <li>• Calendar: Date, day of week</li> </ul>						
<b>Maximum run time from full charge</b>	<ul style="list-style-type: none"> <li>• After charged fully, the watch runs without additional charging</li> </ul> <table border="1"> <thead> <tr> <th>when power save functions for 7.5 hours a day:</th> <th>when power save functions all the day:</th> </tr> </thead> <tbody> <tr> <td> <ul style="list-style-type: none"> <li>• Approximately 9 months (using with a smartphone)</li> <li>• Approximately 1.5 years (using with no smartphones)</li> </ul> </td> <td>Approximately 4 years</td> </tr> </tbody> </table> <ul style="list-style-type: none"> <li>• Power reserve upon insufficient charge warning function: Approximately 10 days</li> </ul>			when power save functions for 7.5 hours a day:	when power save functions all the day:	<ul style="list-style-type: none"> <li>• Approximately 9 months (using with a smartphone)</li> <li>• Approximately 1.5 years (using with no smartphones)</li> </ul>	Approximately 4 years
when power save functions for 7.5 hours a day:	when power save functions all the day:						
<ul style="list-style-type: none"> <li>• Approximately 9 months (using with a smartphone)</li> <li>• Approximately 1.5 years (using with no smartphones)</li> </ul>	Approximately 4 years						
<b>Battery</b>	Rechargeable cell (lithium button cell), 1pc.						
<b>Additional functions</b>	<ul style="list-style-type: none"> <li>• Solar power function</li> <li>• Overcharging prevention function</li> <li>• Insufficient charge warning function (two-second interval movement)</li> <li>• Power reserve indication (in four levels)</li> <li>• Energy saving function (power save feature)</li> <li>• Indication functions about smartphone connection Connection status indication (ON/OFF) Indication of ongoing communication processing (ACT) Notification indication (CALL/INFO/LL)</li> <li>• Automatic time information reception function</li> <li>• Vibration function/vibration test function</li> <li>• Alarm function (ALM ON/OFF)/Alarm monitor function</li> <li>• Chronograph (up to 60 minutes in one second increments)</li> <li>• Local time</li> <li>• Perpetual calendar (until February 28th, 2100)</li> <li>• Impact detection function</li> </ul>						

Specifications and contents of this booklet are subject to change without prior notice.